

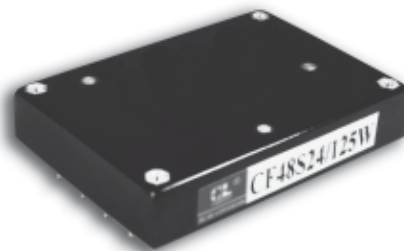
50-125W

DC/DC

CF Series

## Features

High power density  
 II type input filter  
 Design for high reliability, long lifetime  
 Full load efficiency up to 89%  
 Small form factor, high output power  
 Fast dynamic response  
 Natural cooling, heat sink attachable  
 Wide range of power, easy to upgrade



## Input Characteristic

Voltage Range	12 VDC	9-18 VDC
	24 VDC	18-36 VDC
	48 VDC	36-72 VDC

Reverse Protection      Connect Fuse Outside

## Output Characteristic

Voltage Set-point Accuracy	± 1%
Output Voltage Range	± 10%
Line Regulation	± 0.2%
Load Regulation	± 0.4%
Temperature Coefficient	± 0.01%/°C
Output Current Limiting	120%(Typ)
Dynamic Response	400μs
Output Current	1-16A 任选
Output Voltage	1.8-48V
Power	50-125W

## General Characteristic

Switching Frequency	160 - 200	KHz
Isolation Resistance	200	M Ω
MTBF	>500000	h
Isolation Voltage		
Input-Output	>1500	VDC
Input-Case	>1050	VDC
Output-Case	>500	VDC

## Environmental Characteristics

Case Temperature	(Industry) -25 - +85 °C
	(Military I) -40 - +85 °C
	(Military II) -55 - +85 °C
Storage Temperature	(Industry) -45 - +105 °C
	(Military) -55 - +105 °C

## Heat Characteristic

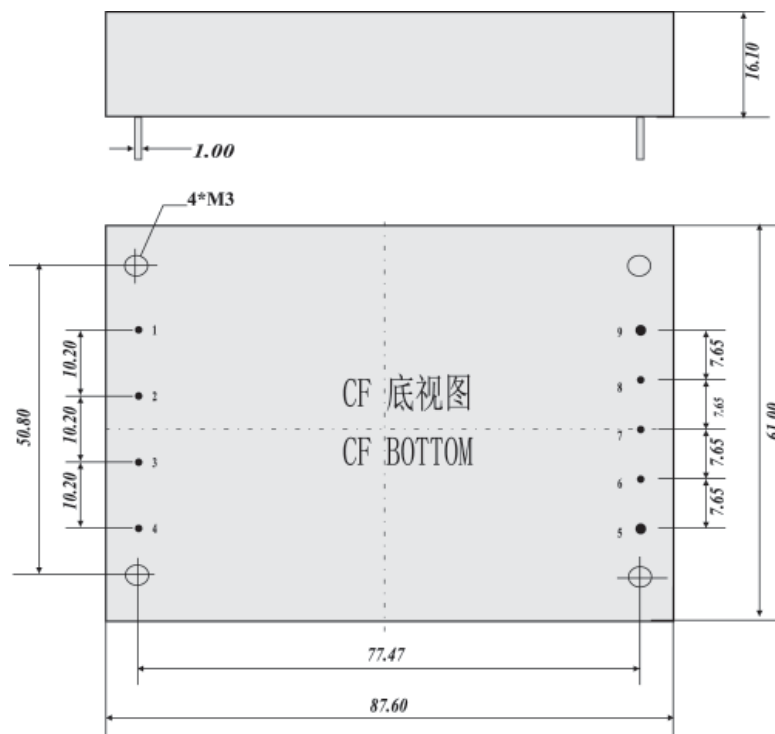
Cooling	Thermal Resistance
Breeze of Nature	
	4.62°C/W
0.5M/S	3.85°C/W
1M/S	2.87°C/W
1.5M/S	2.09°C/W
2M/S	1.73°C/W

## Models

Input voltage (Vdc)	Input Range	Output voltage (Vdc)	Output current (A)	Ripple and noise pk-pk(mv)	Efficiency Typical	Models
12	9-18	05	10	50	85%	CF50-12S05
12	9-18	12	6.25	120	89%	CF75-12S12
12	9-18	15	6.67	150	88%	CF100-12S15
12	9-18	24	5.2	200	88%	CF125-12S24
12	9-18	48	1.04	400	87%	CF50-12S48
24	18-36	05	10	50	85%	CF50-24S05
24	18-36	12	6.25	120	89%	CF75-24S12
24	18-36	15	6.67	150	88%	CF100-24S15
24	18-36	24	5.2	200	87%	CF125-24S24
24	18-36	48	2.08	400	88%	CF100-24S48
48	36-72	05	10	50	85%	CF50-48S05
48	36-72	12	6.25	120	89%	CF75-48S12
48	36-72	15	6.67	150	87%	CF100-48S15
48	36-72	24	5.2	200	88%	CF125-48S24
48	36-72	48	2.6	400	88%	CF125-48S48

Only typical models listed. If you need other model, please contact us for costum models

## Mechanical drawing and pin definition



单位 (Unit) :mm

引脚 PIN	单路 SING
1	-Vin
2	REM
3	CASE
4	+Vin
5	+Vo
6	+SENSE
7	TRIM
8	-SENSE
9	-Vo